

IT

**DIMENSIONI E  
DIAGRAMMI DI CARICO**

 MRT 2150 Privilege Plus ST4 S2  
 MRT-X 2150 Privilege Plus ST3A S2

EN

**DIMENSIONS AND  
LOAD DIAGRAMS**

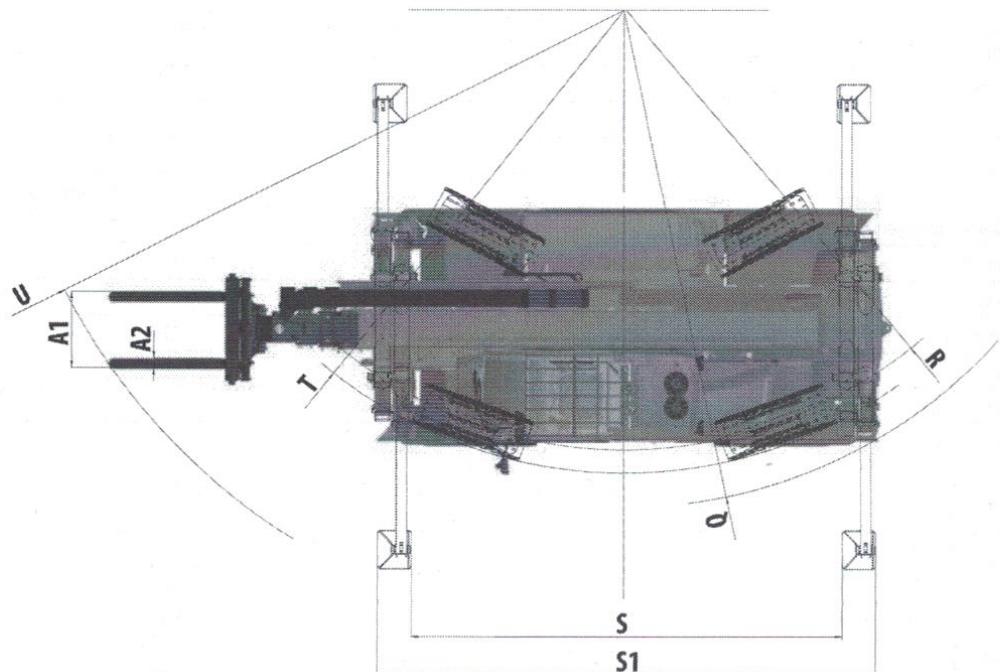
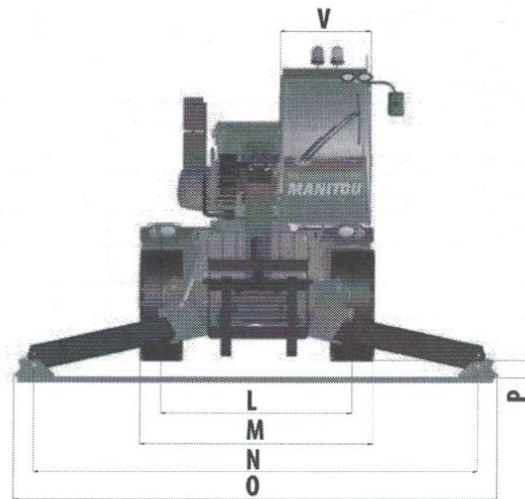
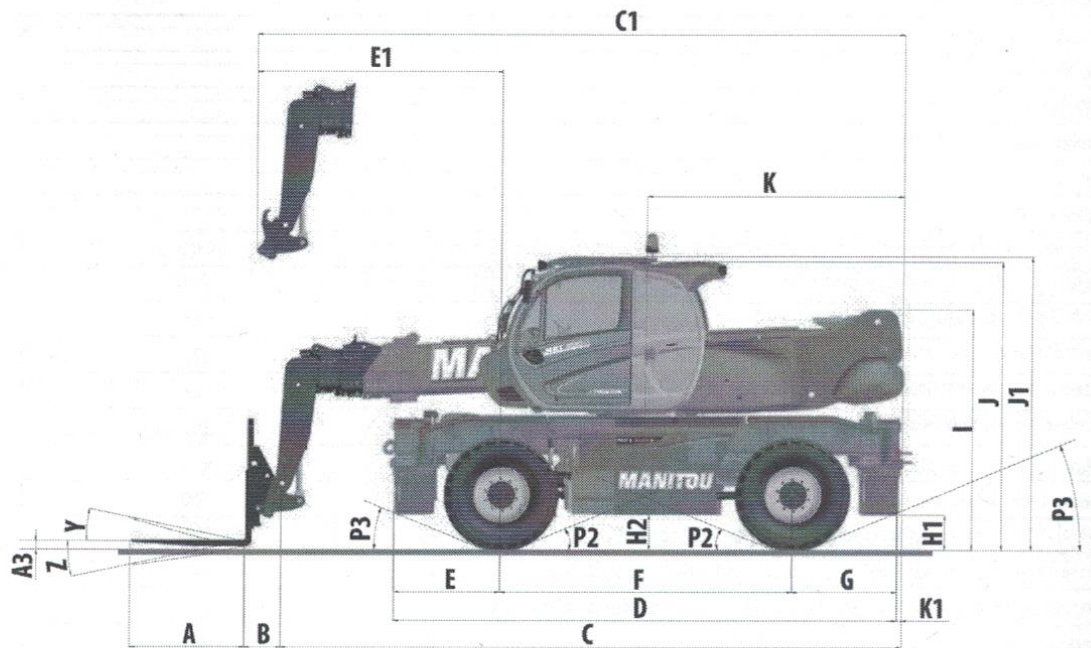
 MRT 2150 Privilege Plus ST4 S2  
 MRT-X 2150 Privilege Plus ST3A S2

DE

**ABMESSUNGEN UND  
TRAGLASTDIAGRAMME**

 MRT 2550 Privilege Plus ST4 S2  
 MRT-X 2550 Privilege Plus ST3A S2

	mm	in
A	1200	47,24
A1	1320	51,97
A2	150	5,91
A3	60	2,36
B	380	14,96
C	6440	253,54
C1	6700	263,78
D	5290	208,27
E	1125	44,29
E1	2600	102,36
F	3050	120,08
G	1135	44,69
H1	350	13,78
H2	340	13,39
I	2600	102,36
J	3015	118,70
J1	3060	120,47
K	2650	104,33
K1	50	1,97
L	2045	80,51
M	2490	98,03
N	5160	203,15
O	5580	219,69
P	190	7,48
P2		16°
P3		23°
Q	5150	202,76
R	4430	174,41
S	4500	177,17
S1	5200	204,72
T	4650	183,07
U	6500	255,91
V	950	37,40
Y		13°
Z		105°



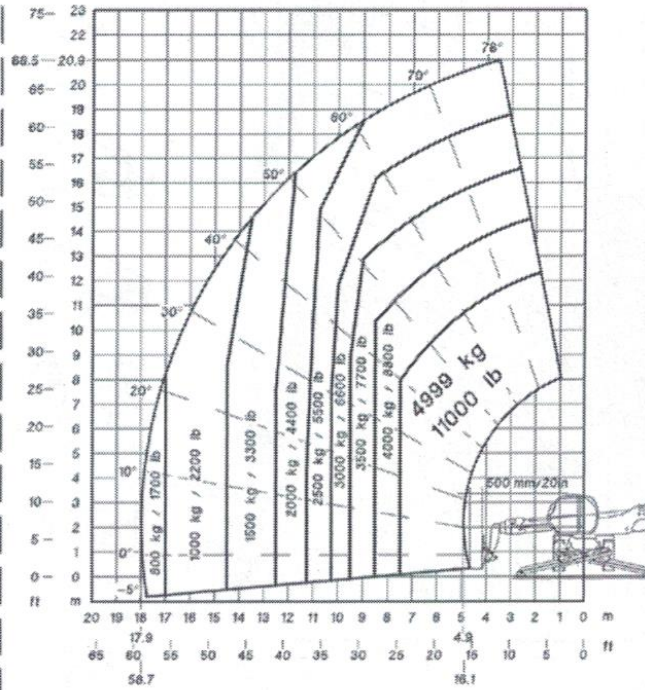




# MRT 2150+

PFB FEM L.C. 500mm/20in

Pos. A



Standard used EN1459 - AS1418.19 - ASME B56.6



L max



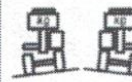
30 Km/ Max (10 m/s)



1% Max



1% Max



1% Max



1% Max

Ground conditions: solid surface



0km/h

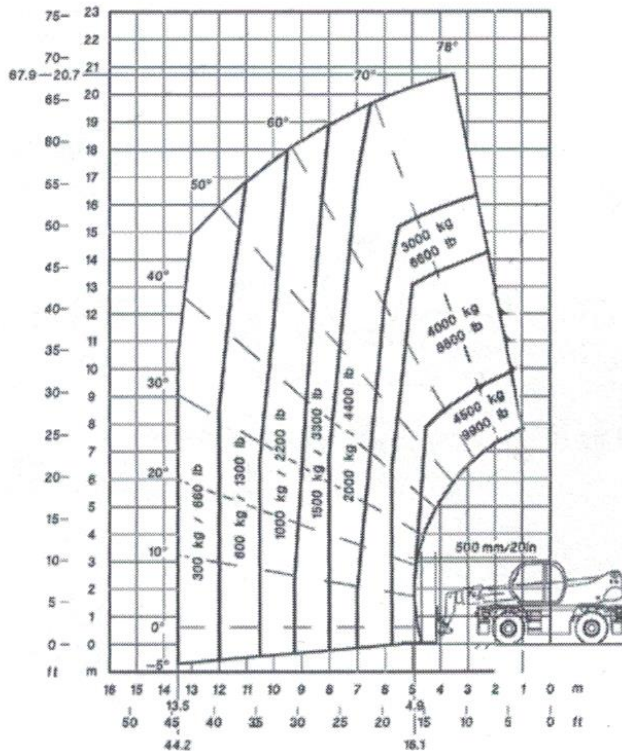
53018848



# MRT 2150+

PFB FEM L.C. 500mm/20in

Pos. A



Standard used EN1459 - AS1418.19 - ASME B56.6



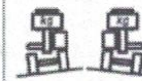
36 Km/ Max (10 m/s)



1% Max



1% Max



1% Max



1% Max

Ground conditions: solid surface



0km/h

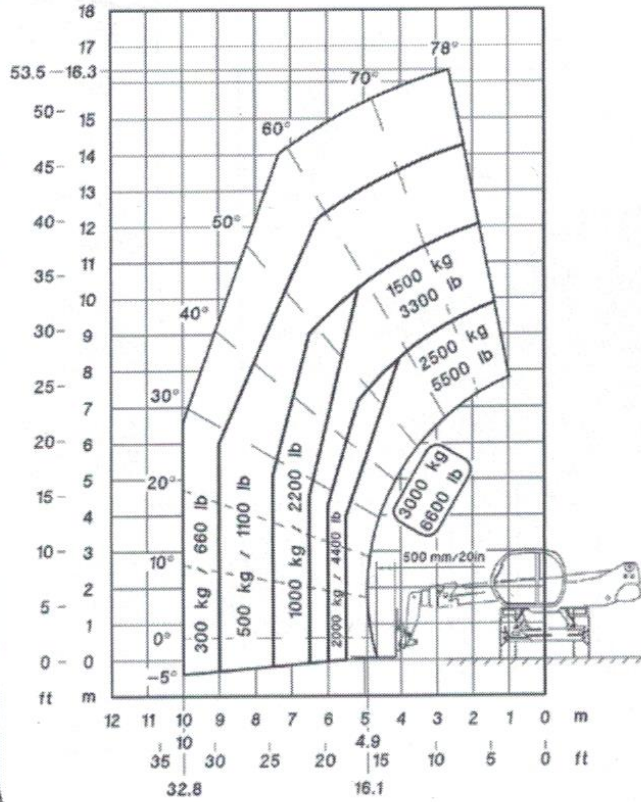
53018848



# MRT 2150+

PFB FEM L.C. 500mm/20in

Pos. A



Standard used EN1459 - AS1418.19 - ASME B56.6



36 Km/ Max (10 m/s)



1% Max



1% Max



1% Max 1% Max



Ground conditions: solid surface



0km/h

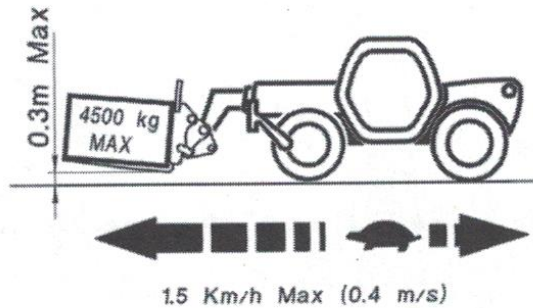
53018850



# MRT 2150+

PFB FEM L.C. 500mm/20in

Pos. A



36 km/ Max (10 m/s)



8.75% Max



8.75% Max



8.75% Max 8.75% Max



Ground conditions: solid surface

53018852

Standard used EN1459 - AS1418.19 - ASME B56.6



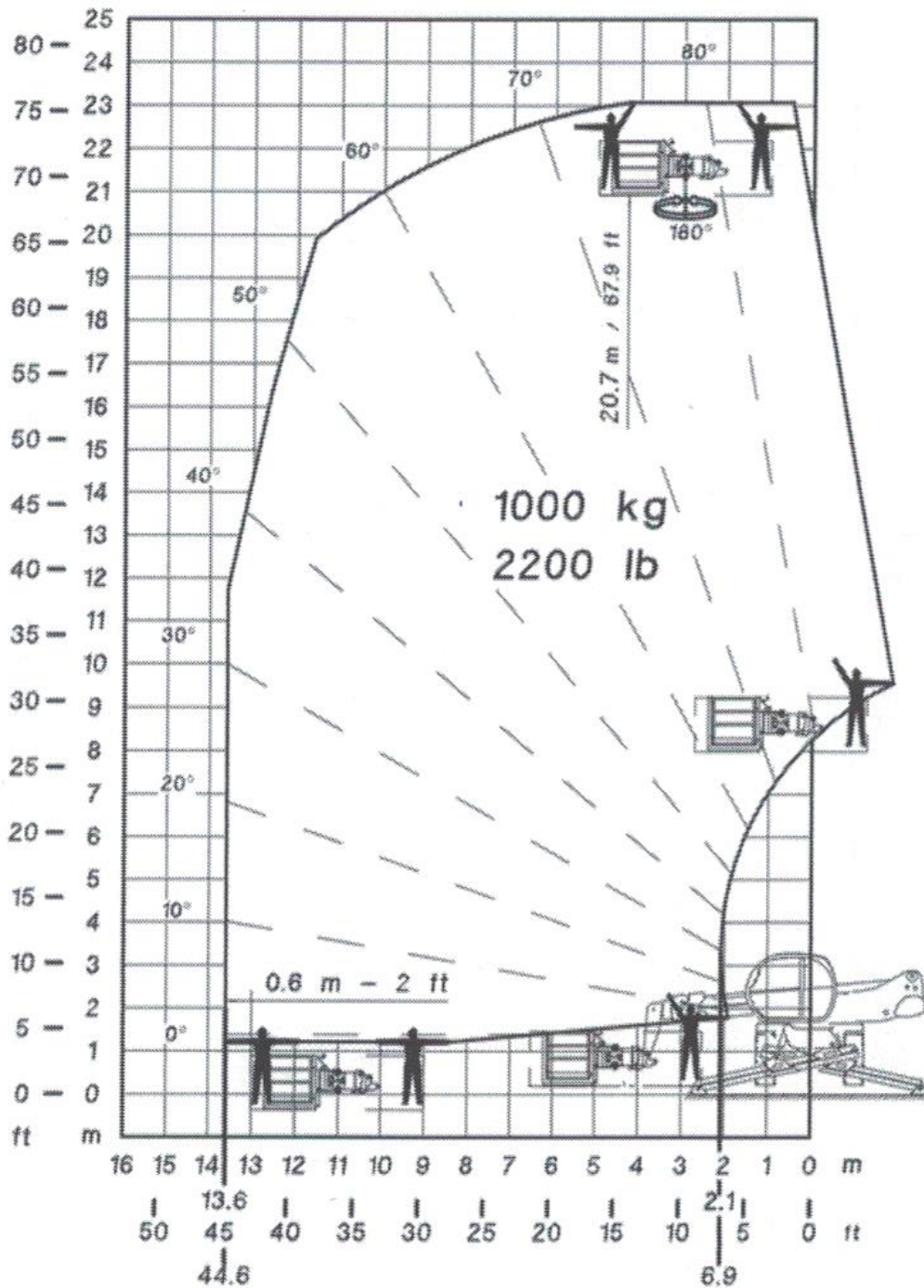


# MRT 2150+

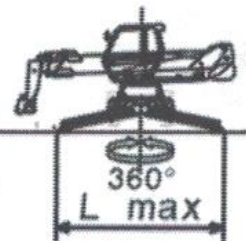
PSE 4400-1000 D



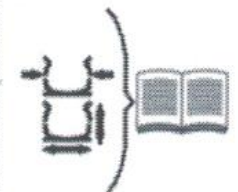
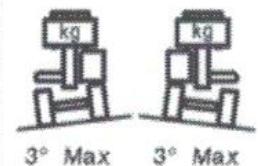
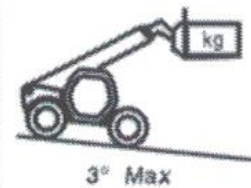
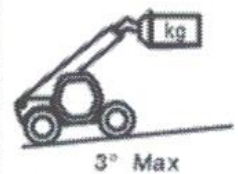
Pos. TT



Standard used EN280 - AS14.10



45 Km/h Max  
(12.5 m/s)



Ground conditions:  
solid surface



53019624

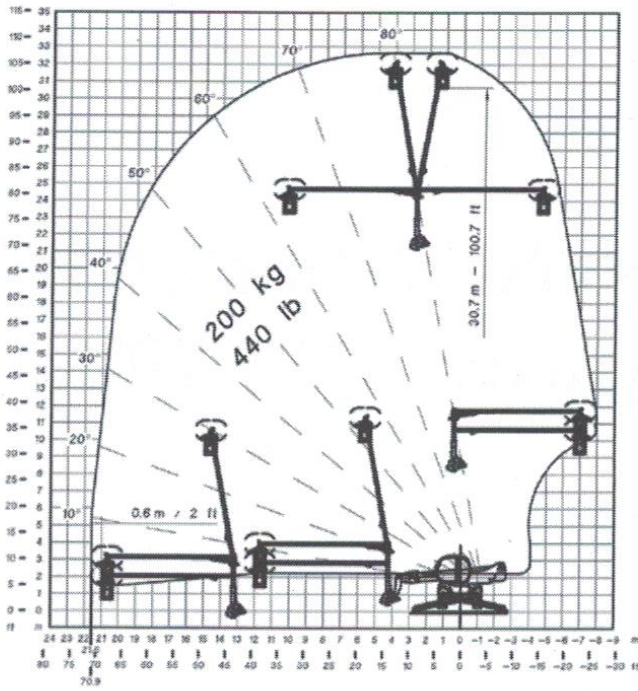
**MANITOU**

**MRT 2150+**

CPR 3D+



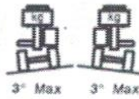
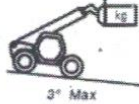
Pos. X



Standard used EN280 - AS14.10



45 Km/h Max  
(12.5 m/s)



Ground conditions:  
solid surface



53021320

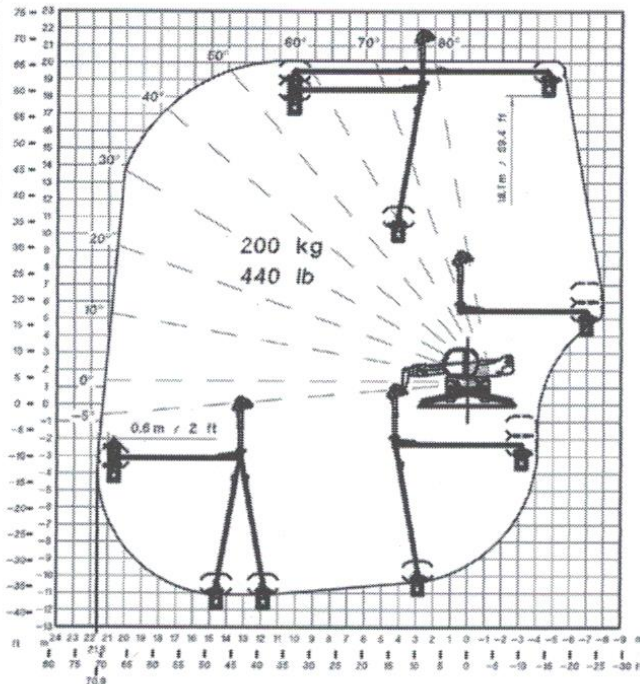
**MANITOU**

**MRT 2150+**

CPR 3D-



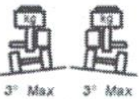
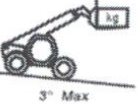
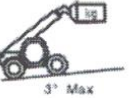
Pos. X



Standard used EN280 - AS14.10



45 Km/h Max  
(12.5 m/s)



Ground conditions:  
solid surface



53021328

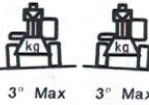
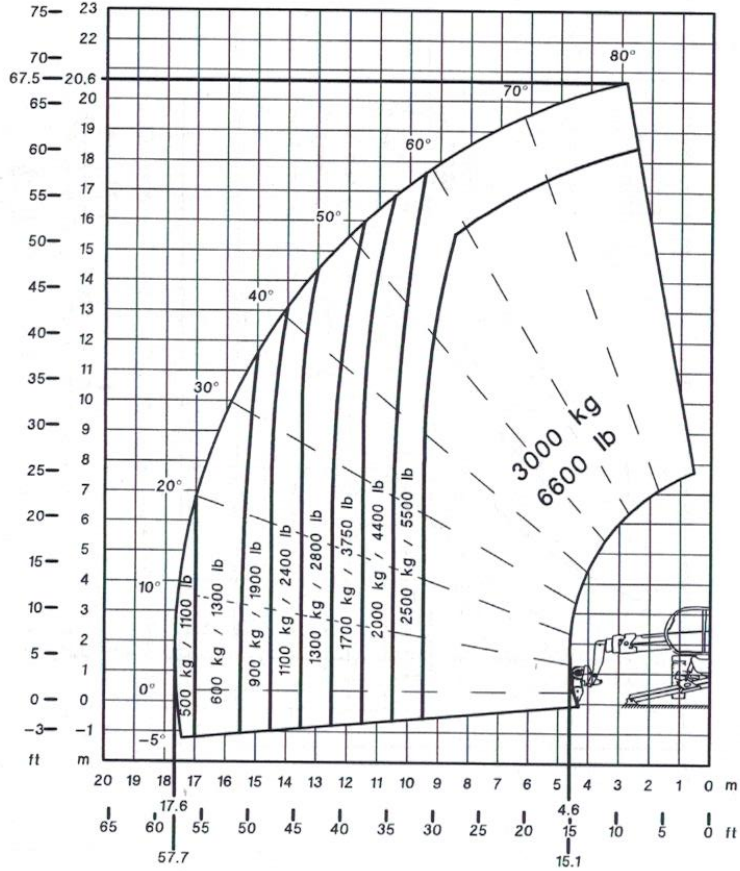
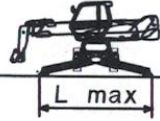




# MRT 2150+

## Winch 3T

## Pos. C



Ground conditions:  
solid surface



53019376

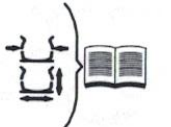
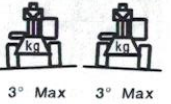
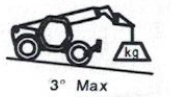
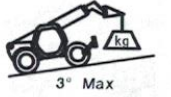
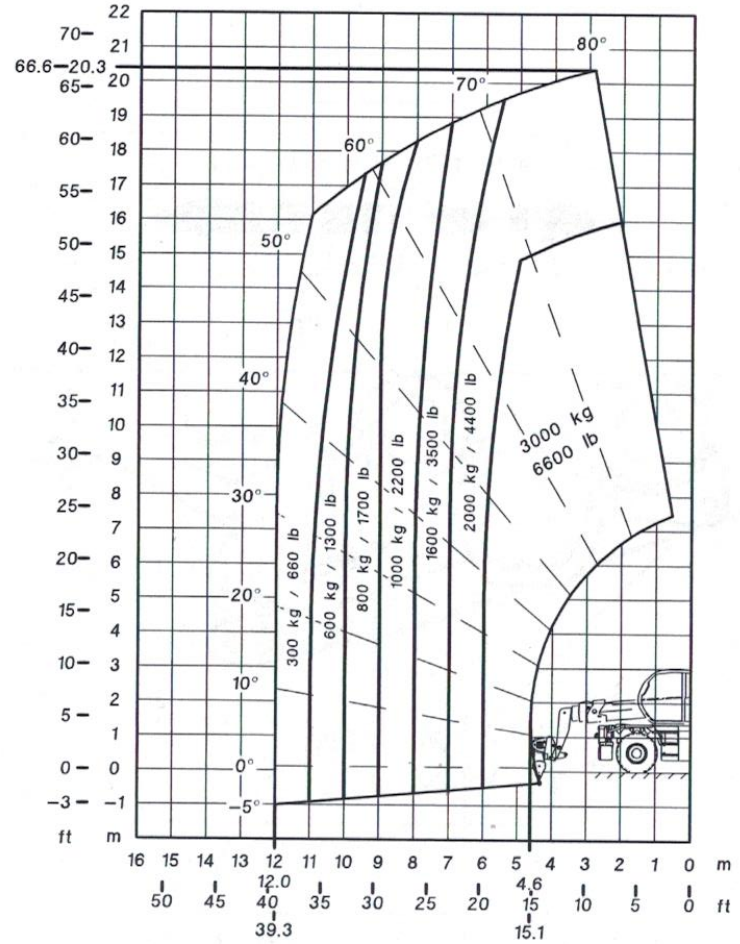
Standard used EN1459 - AS1418.19 - ASME B56.6



# MRT 2150+

## Winch 3T

## Pos. C



Ground conditions:  
solid surface



53019377

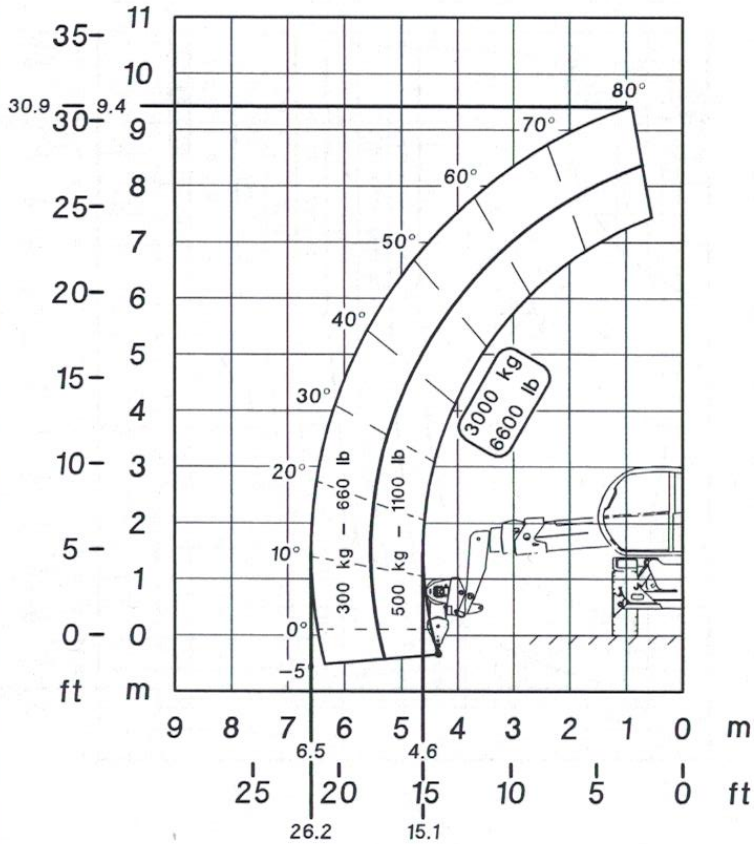
Standard used EN1459 - AS1418.19 - ASME B56.6

**MANITOU**

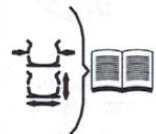
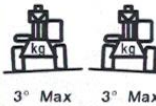
**MRT 2150+**

Winch 3T

Pos. C



Standard used EN1459 - AS1418.19 - ASME B56.6



Ground conditions: solid surface



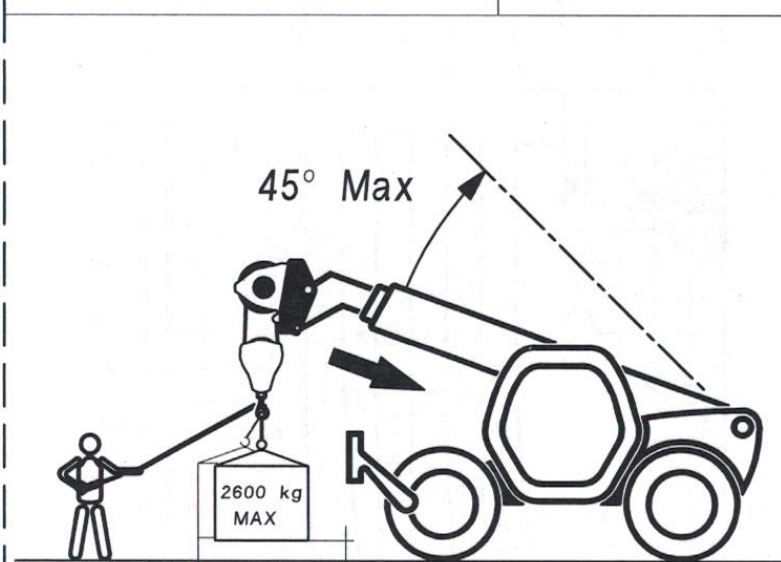
53019378

**MANITOU**

**MRT 2150+**

Winch 3T

Pos. C



3m Min

0.3m Max



1.5 Km/h Max (0.4 m/s)



36 km/ Max (10 m/s)



8.75% Max



8.75% Max



8.75% Max



Ground conditions: solid surface

53019379

Standard used EN1459 - AS1418.19 - ASME B56.6





# MRT 2150+

PC 50

Pos. S



L max



36 Km/h Max  
(10 m/s)



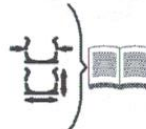
3° Max



3° Max



3° Max 3° Max

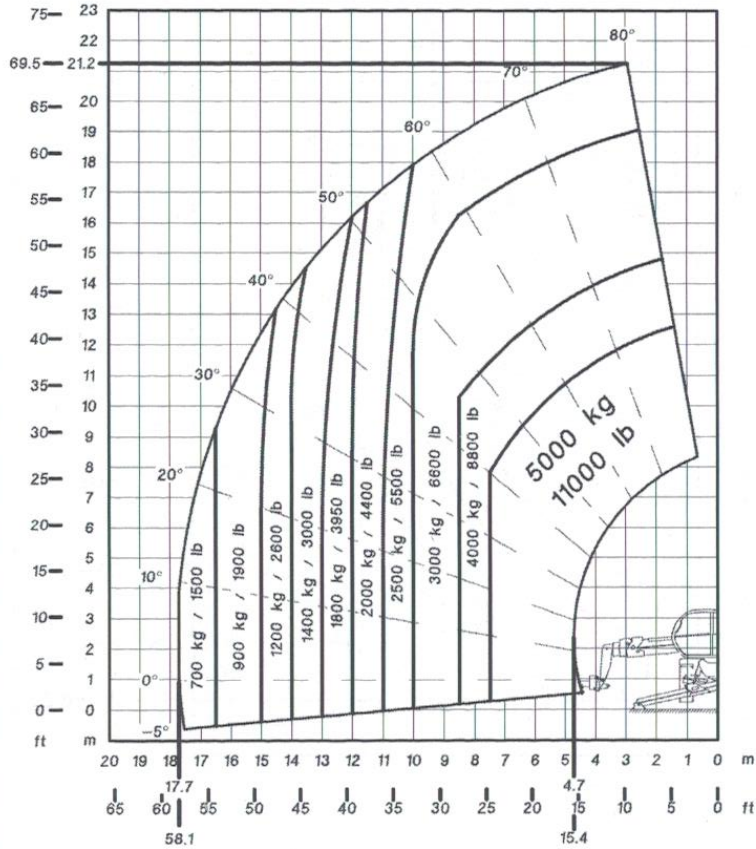


Ground conditions:  
solid surface



0km/h

53019401



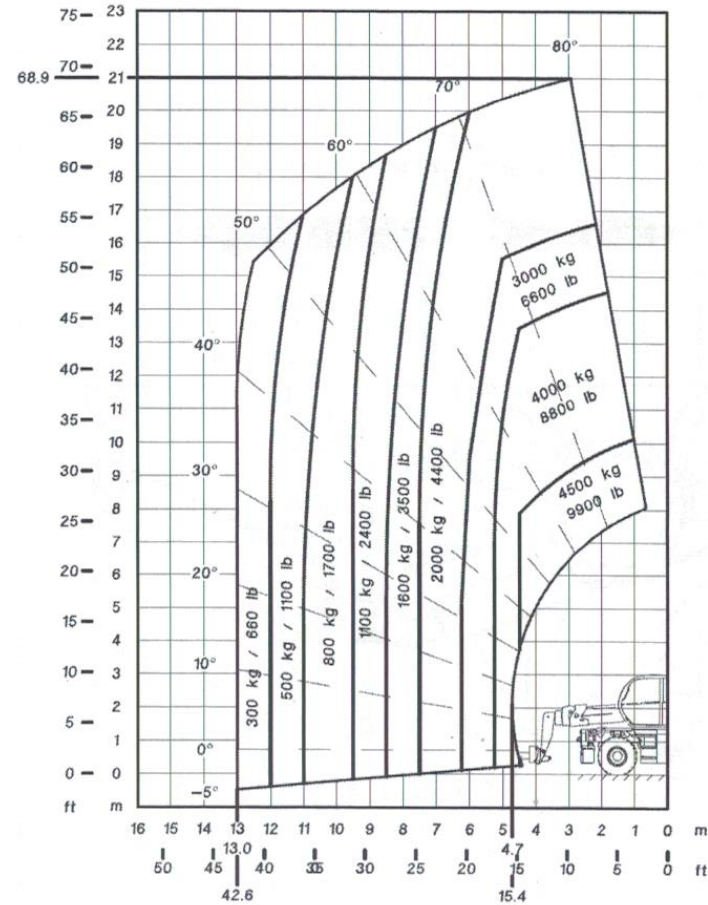
Standard used EN1459 - AS1418.19 - ASME B56.6



# MRT 2150+

PC 50

Pos. S



36 Km/h Max  
(10 m/s)



3° Max



3° Max



3° Max 3° Max



Ground conditions:  
solid surface



0km/h

5309402

Standard used EN1459 - AS1418.19 - ASME B56.6

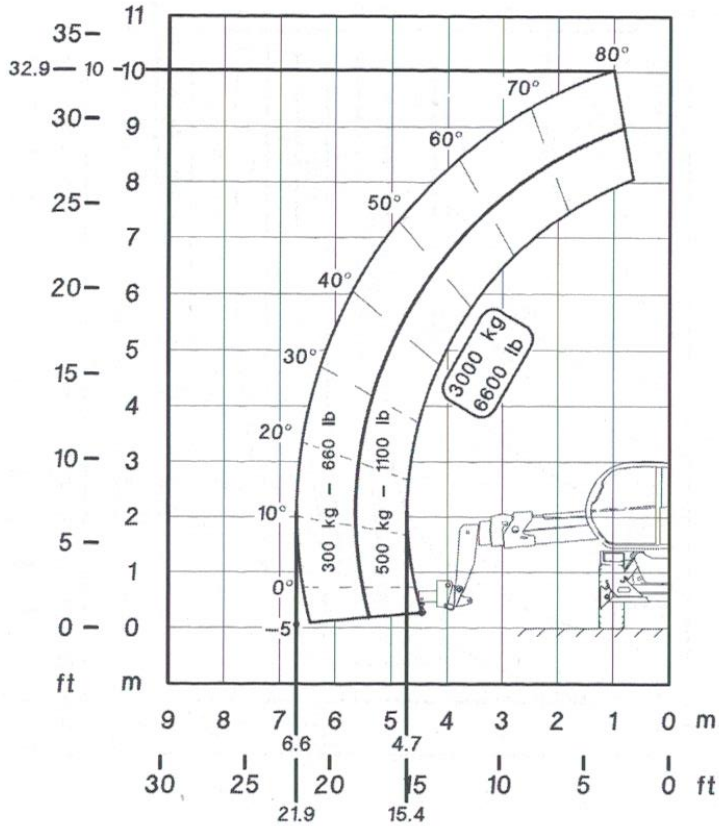




# MRT 2150+

PC 50

Pos. S



Standard used EN1459 - AS1418.19 - ASME B56.6



36 Km/s Max (10 m/s)



3° Max



3° Max



3° Max 3° Max



Ground conditions: solid surface



0km/h

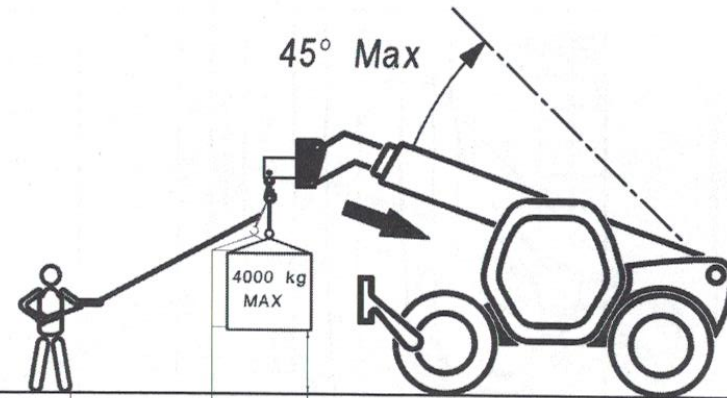
53019403



# MRT 2150+

PC 50

Pos. S



1.5 Km/h Max (0.4 m/s)

Standard used EN1459 - AS1418.19 - ASME B56.6



36 km/ Max (10 m/s)



8.75% Max



8.75% Max



8.75% Max 8.75% Max



Ground conditions: solid surface

53019405



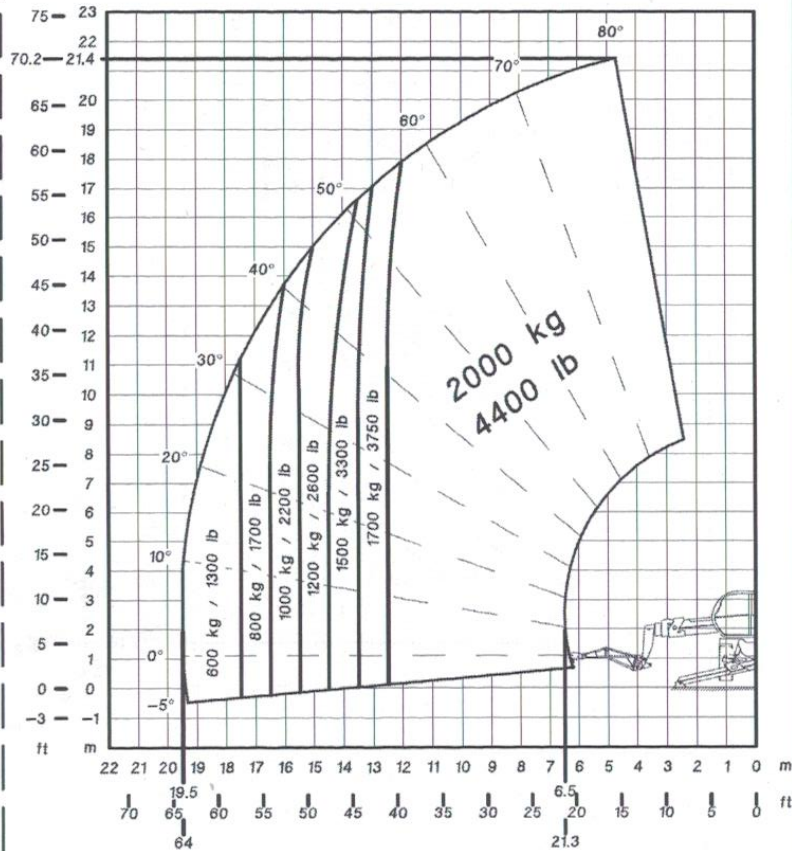
# MRT 2150+

## P2000

## Pos. H



L max



Standard used EN1459 - AS1418.19 - ASME B56.6



36 Km/h Max  
(10 m/s)



3° Max



3° Max



3° Max 3° Max



Ground conditions:  
solid surface



0km/h

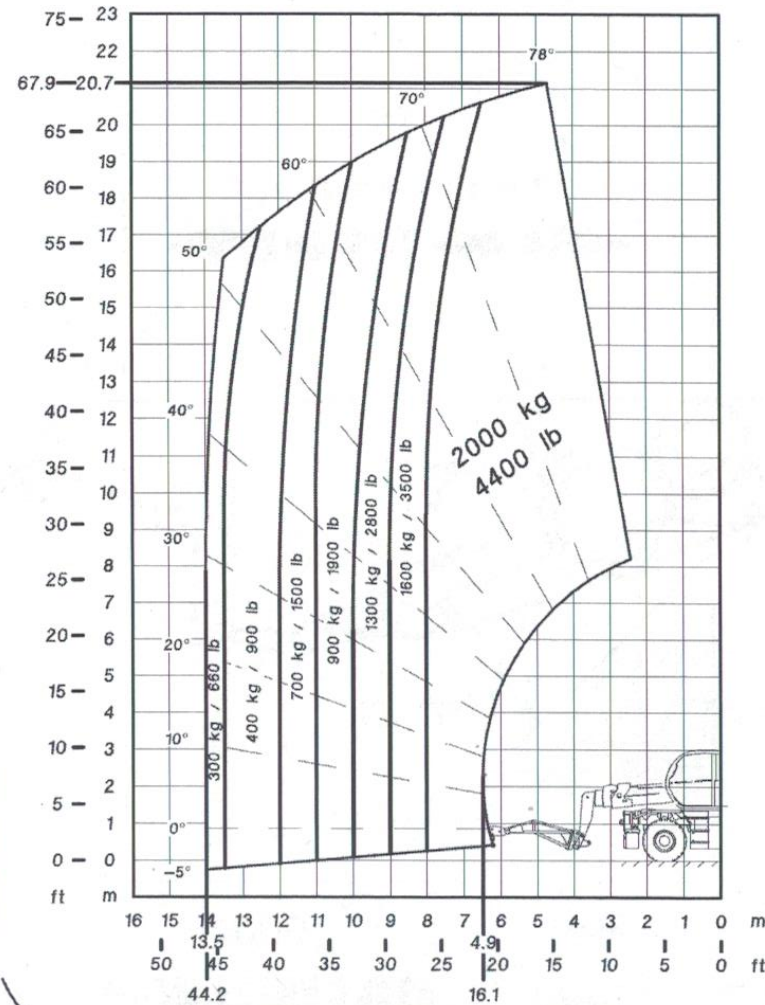
53019513



# MRT 2150+

## P2000

## Pos. H



Standard used EN1459 - AS1418.19 - ASME B56.6



36 Km/h Max  
(10 m/s)



3° Max



3° Max



3° Max 3° Max



Ground conditions:  
solid surface



0km/h

53019514

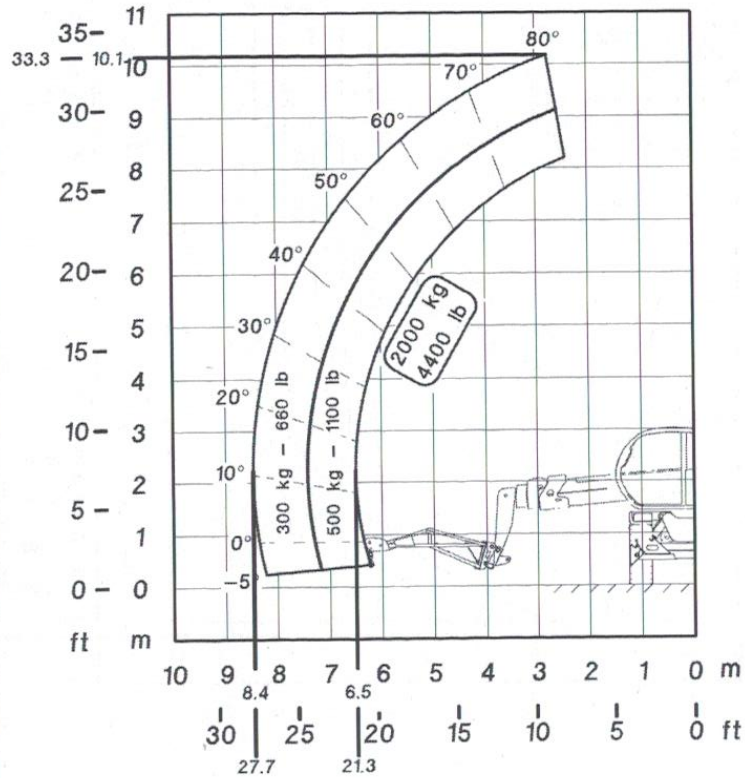




# MRT 2150+

P2000

Pos. H



Standard used EN1459 - AS1418.19 - ASME B56.6



36 Km/h Max (10 m/s)



3° Max



3° Max



3° Max



3° Max

Ground conditions: solid surface



0km/h

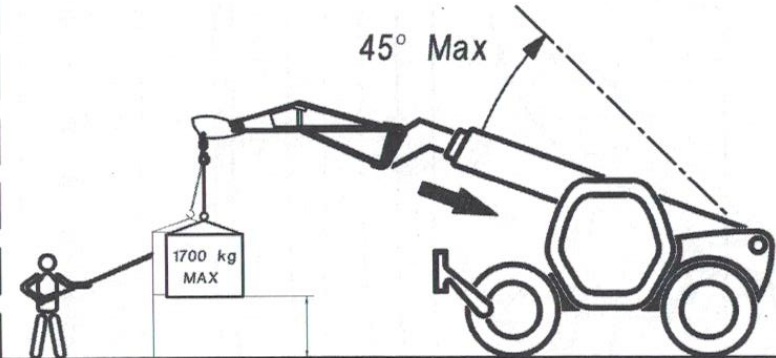
53019515



# MRT 2150+

P2000

Pos. H



1.5 Km/h Max (0.4 m/s)

Standard used EN1459 - AS1418.19 - ASME B56.6



36 km/h Max (10 m/s)



8.75% Max



8.75% Max



8.75% Max



Ground conditions: solid surface

53019516

IT

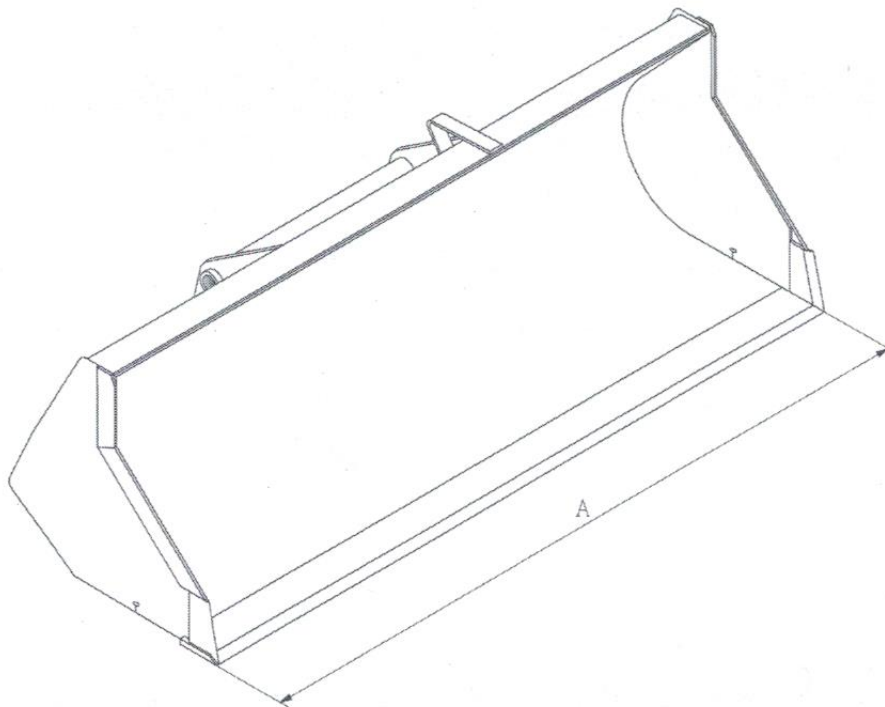
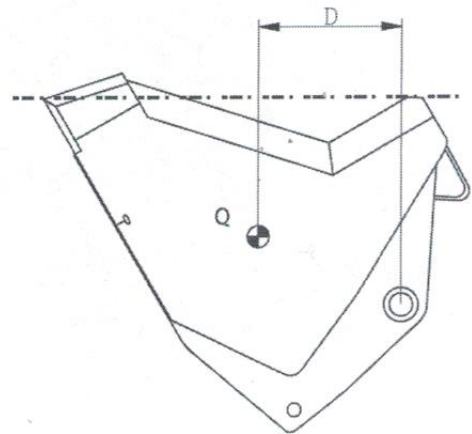
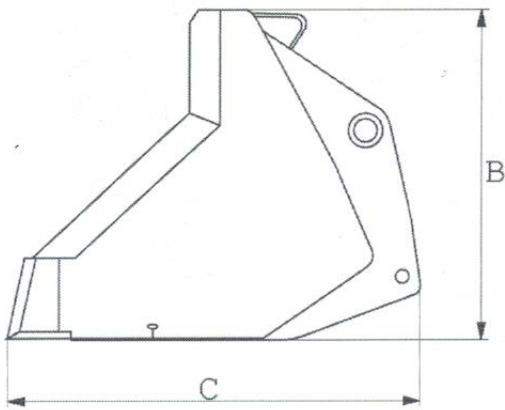
PALA DI RIPRESA

EN

LOADING BUCKET SHELL

DE

LADESCHAUFEL



## CARATTERISTICHE - CHARACTERISTICS - DATEN

DESCRIZIONE DESIGNATION BESCHREIBUNG	CAPACITA' CAPACITY KAPAZIETAET			CARICO LOAD CENTER LAST  D	MIS. INGOMBRO OVERAL LENGTH ABMESSUNGEN			PESO WEIGHT GEWICHT
	LIVELLO LEVEL LEVEL	NOMINALE NOMINAL NOMINAL	MASSIMO MAXIMUM MAXIMUM		(mm)			
					A	B	C	
CBR 1000 L 2450	804 L	990 L	1089 L	345 mm	2450	775	976	381 Kg



IT

EN

DE

**CESTELLO PENDOLO 3D****SYSTEM 3D****SYSTEM 3D****Descrizione:**

Cestello porta persone montato su un braccetto sfilabile che chiuso misura 11 m e aperto 12 m. Il braccetto è dotato di una rotazione che permette al cestello di ruotare di 340° senza dover muovere la macchina. L'accessorio può essere agganciato in due posizioni: una permette di aumentare il raggio d'azione della macchina in altezza di 12 m, mentre l'altra consente di lavorare in negativo.

**Caratteristiche:**

- La portata massima è di 200Kg.
- Il numero massimo di persone è di due.
- Le dimensioni del cestello sono :  
1mt x 0,7mt.
- Rotazione idraulica di 340°.

**Sicurezza:**

- Sensore di rilevamento della posizione del braccetto

**Description:**

Basket for carrying persons fitted on extendable arm which measures 11 m [36 ft] when closed and 12 m [39.3 ft] when open. The jib rotation is such that the basket can be rotated through 340° without the need to move the vehicle. The attachment can be fixed in two positions: one makes it possible to increase the machine's radius of action in height to 12 m [39.3 ft], while the other makes it possible to work better in negative.

**Features:**

- The maximum capacity is 200 kg [440 lb].
- The maximum number of persons allowed is two.
- The basket dimensions are: 1 m x 0.7 m [3.2 in x 2.2 in].
- 340° hydraulic rotation.

**Safety devices:**

- Sensor for detecting position of jib.

**Beschreibung:**

Personenkorb, auf ausziehbarem Korbarm montiert, der eingefahren 11 m und ausgefahren 12 m lang ist. Der Arm ist mit einer Schwenkvorrichtung versehen, damit der Korb sich um 340° drehen kann, ohne die Maschine bewegen zu müssen. Das Anbaugerät kann in zwei Positionen angebracht werden: Eine gestattet es, die Reichweite der Maschine in der Höhe um 12 m zu erhöhen, während die andere es gestattet, im negativen Bereich zu arbeiten.




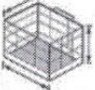

**Eigenschaften:**

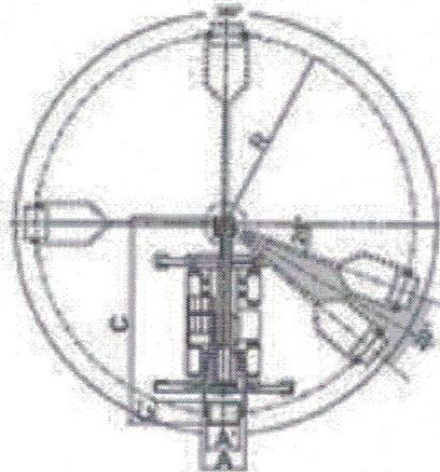
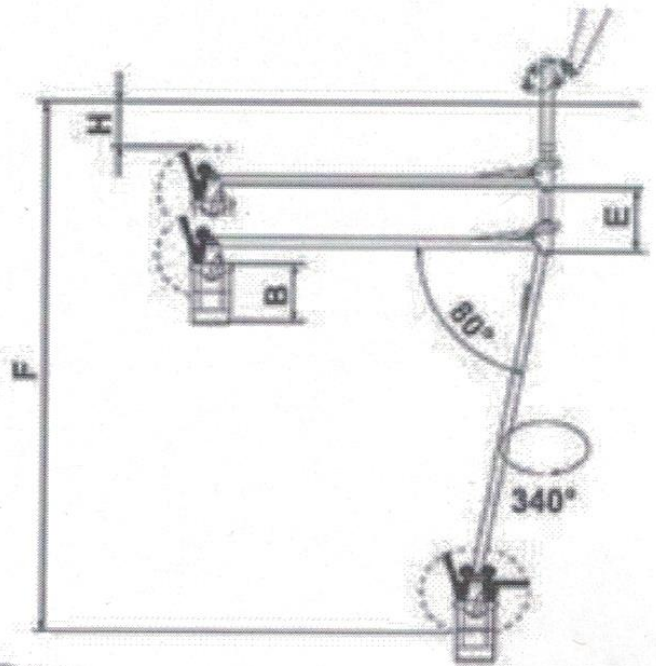
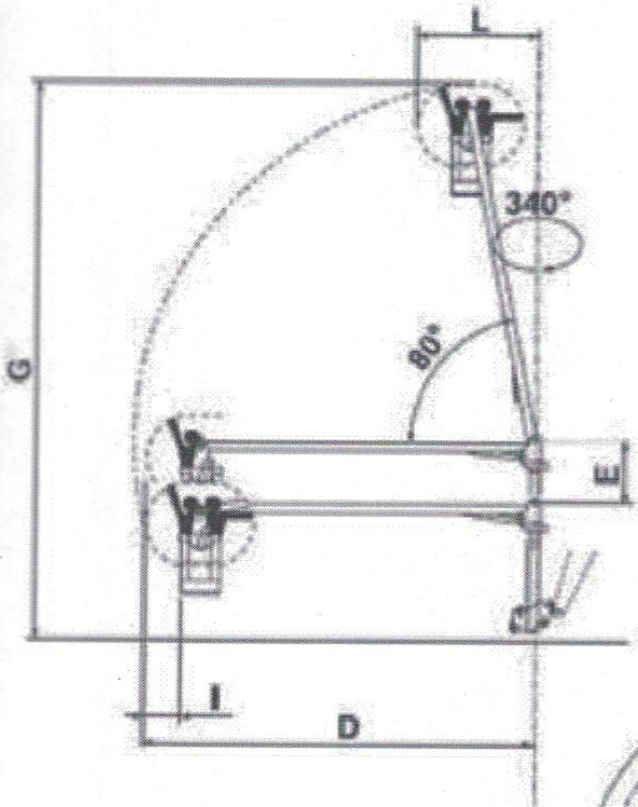
- Die max. Tragkraft beträgt 200 kg.
- Die Höchstanzahl der Personen beträgt zwei.
- Die Abmessungen des Korbs betragen:  
1 m x 0,7 m
- Hydraulische Drehung um 340°

**Sicherheiten:**

- Sensor zur Erfassung der Armposition



[kg] (lb)			[mm] (in)											[kg] (lb)	
															
200 (441)	40 (88)	2	A	A'	B	C	C'	D	E	F	G	H	I	R	1025 (2260)
			1650 (65)	1060 (42)	1130 (4)	8389 (330)	680 (27)	8365 (329)	1100 (43)	10590 (417)	11660 (459)	900 (35)	600 (24)	7425 (292)	





IT

**Descrizione:**

Braccetto lungo 2,5mt con una portata di 2000Kg.

EN

**Description:**





2.5m long arm with carrying capacity of 2000 kg.

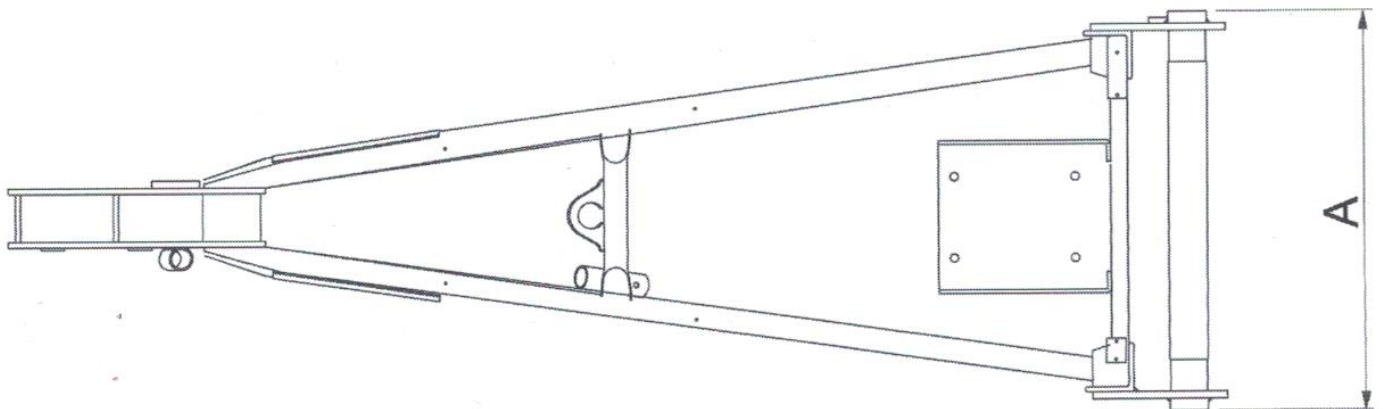
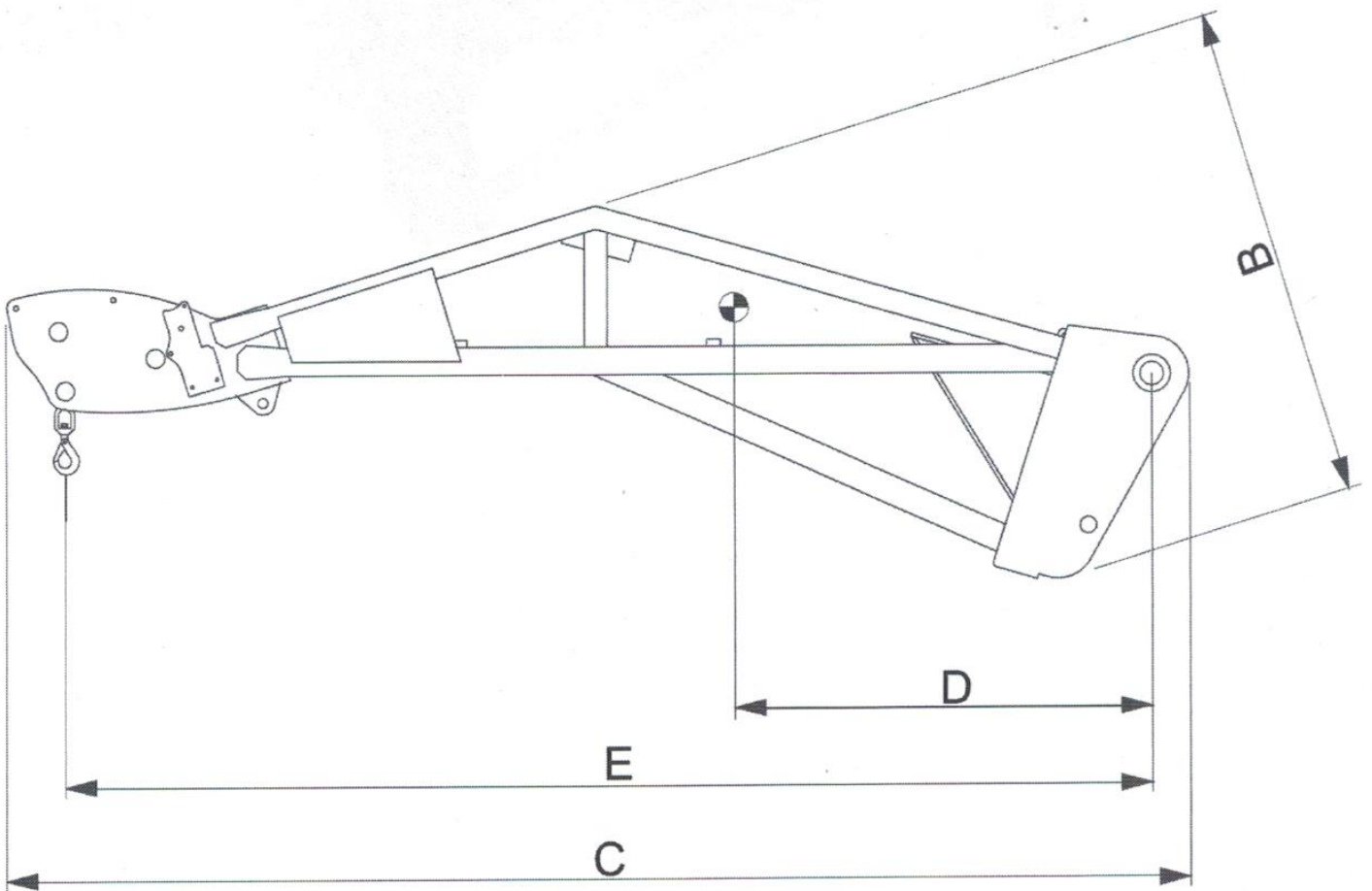
DE

**Beschreibung:**

Verlängerung mit 2,5 m Länge und Tragkraft von 2000 kg.



[kg] (lb)	[t] (t)	[mm] (in)									[kg] (lb)
											
1500 (3306)	5 (5)	A	B	C	D	E	F	G	H	I	186 (410)
		750 (29)	15 (0,5)	2950 (116)	353 (13,8)	228 (9)	965 (38)	2500 (98)	2660 (105)	2819 (111)	





IT

**Descrizione:**

Braccetto lungo 0,50 m con una portata di 5000Kg.

EN

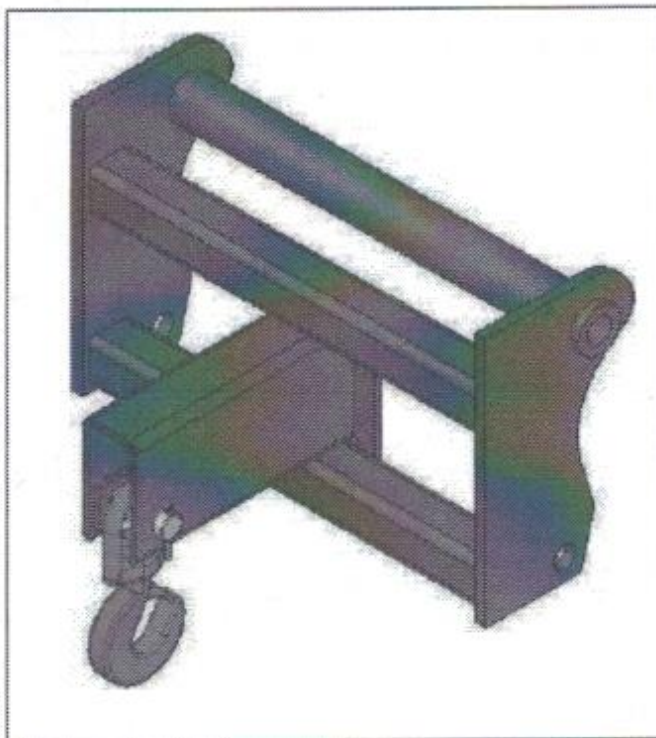
**Description:**





0.50 m long arm with a capacity of 5000 kg.

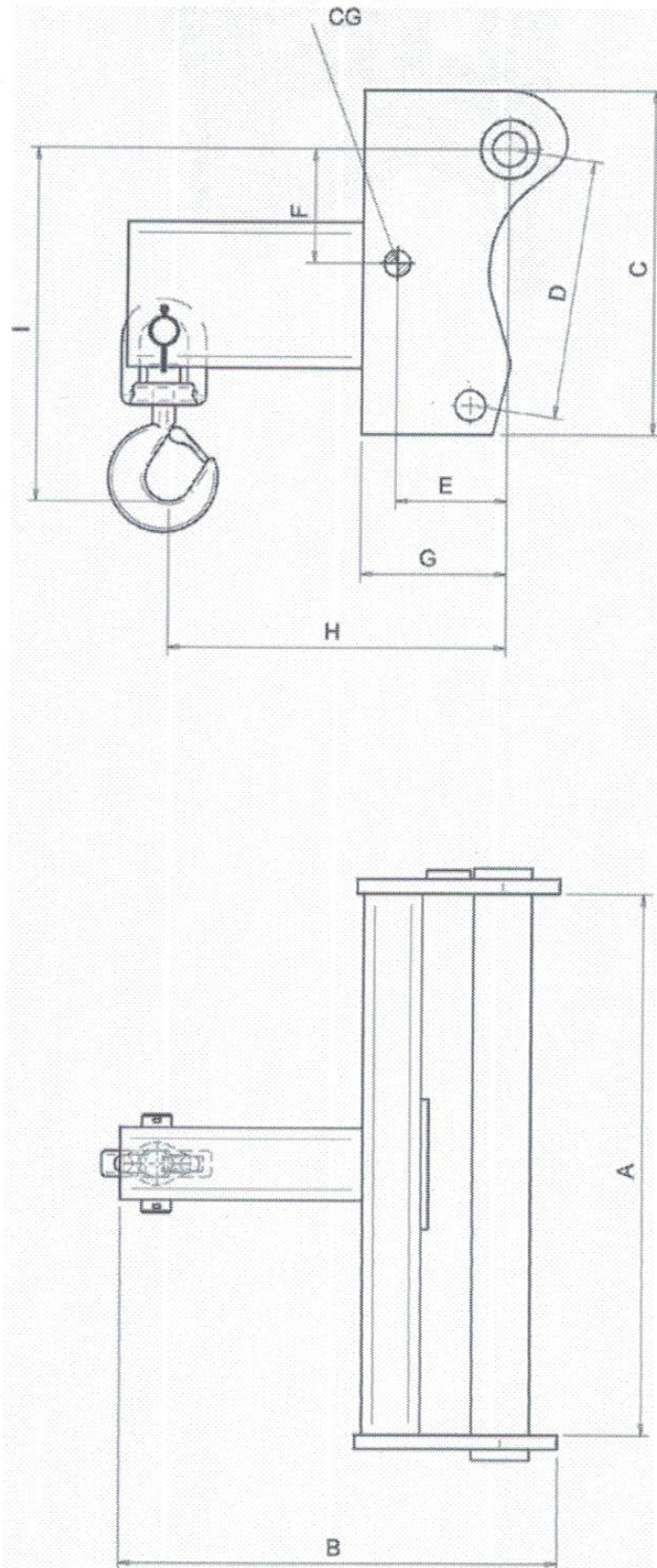
DE

**Beschreibung:**

Verlängerung mit 0,50 m Länge und Tragkraft von 5000 kg.



[kg] (lb)	[t] (t)	[mm] (in)									[kg] (lb)
											
5000 (11023)	5 (5)	A	B	C	D	E	F	G	H	I	120 (265)
		740 (29)	598 (23)	470 (18)	354 (14)	153 (6)	156 (6,1)	200 (7,8)	462 (18)	484 (19)	





IT

### PIATTAFORMA ESTENSIBILE ROTANTE PSE 4400 / 1000 D

#### Descrizione:

Cestello porta persone estensibile con rotazione.

#### Caratteristiche:

- La portata massima è di 1000 Kg.
- Il numero massimo di persone è di tre.
- Il cestello è estensibile da 2,25mt (chiuso) a 4,00mt (aperto).
- Rotazione idraulica di 90°+ 90°.
- Sportello apribile su un lato della piattaforma
- Possibilità di salita anche senza dover estendere il cestello
- Presenza di due tasche per facilitarne lo spostamento tramite forche.

#### Sicurezza:

- Sensore di sovraccarico
- Sensore di presenza del perno di sicurezza

EN

### PLATFORM SLEWING EXTENSIBLE PSE 4400 / 1000 D

#### Description:

Extendable basket with rotation for carrying persons.

#### Features:

- The maximum capacity is 1000 kg (2205 lb).
- The maximum number of persons allowed is three.
- The basket can be extended from 2.25 m (7.4 ft) [closed] to 4.00 m (13.1 ft) [open].
- 90°+ 90° hydraulic rotation.
- Door can be opened on one side of platform
- Possibility of ascent even without having to extend the basket
- Two pockets present to make it easier to shift using forks

#### Safety devices:

- Overload sensor.
- Shear pin presence sensor.

DE

### AUSZIEHBARE UND ROTIERENDE PLATTFORM PSE 4400 / 1000 D

#### Beschreibung:

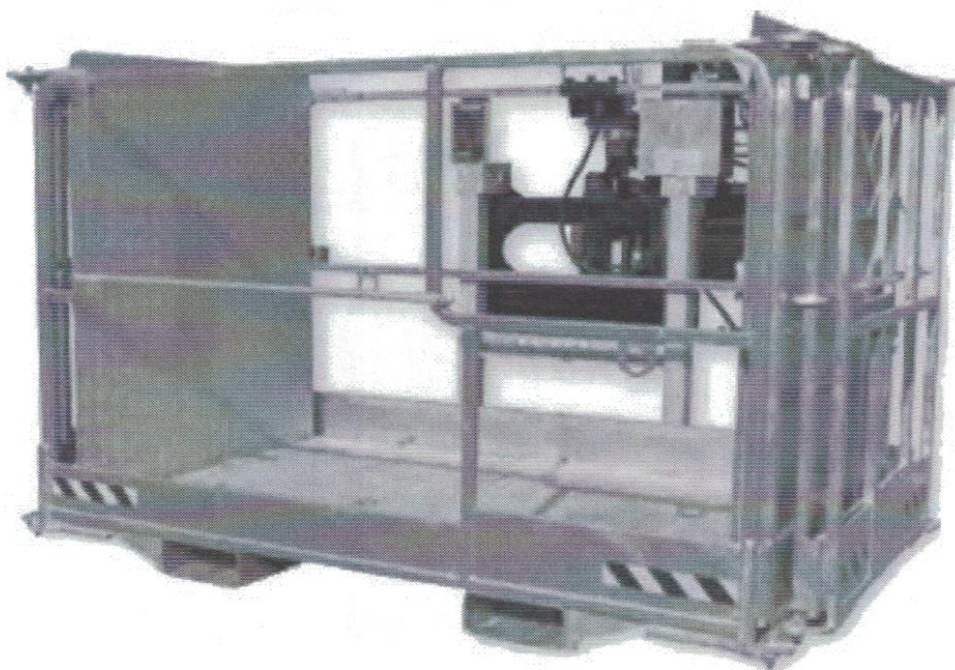
Personenkorb ausziehbar mit Rotation.




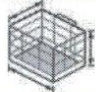
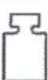
#### Eigenschaften:

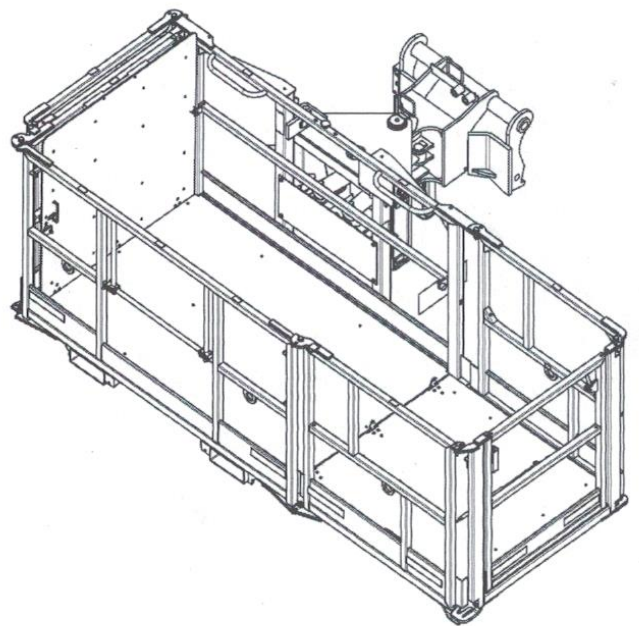
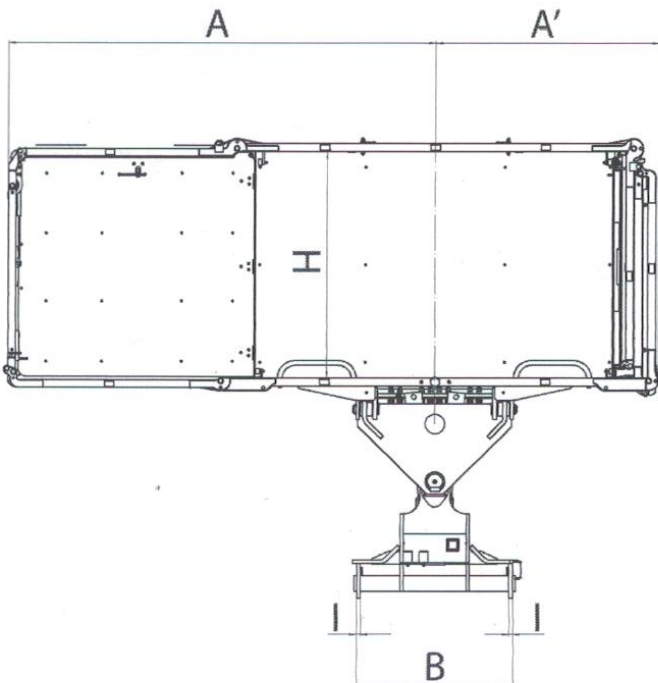
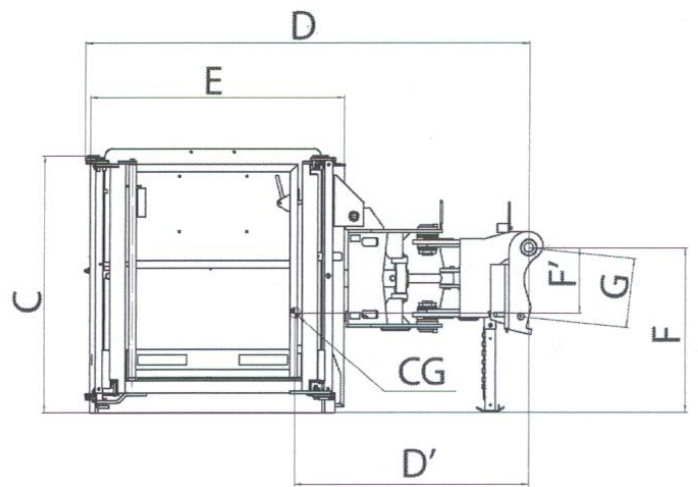
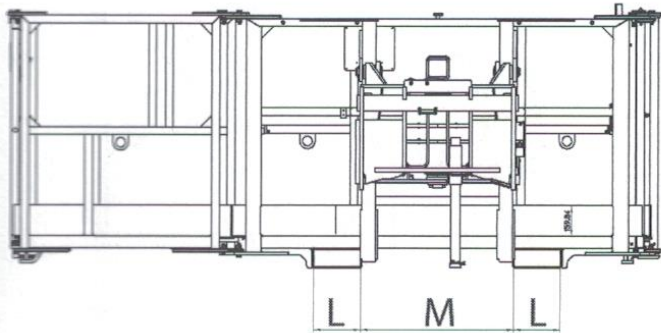
- Die maximale Tragkraft beträgt 1000 kg.
- Maximale Anzahl der Personen: drei.
- Der Korb kann von 2,25mt (geschlossen) auf 4,00mt (offen) ausgezogen werden.
- Hydraulische Drehung von 90°+ 90°.
- Klappe auf einer Seite der Plattform, die geöffnet werden kann
- Möglichkeit des Einsteigens, auch ohne den Korb ausziehen zu müssen
- Anwesenheit von zwei Taschen, um die Versetzung auch mit Gabeln zu erlauben.

#### Sicherheitsvorrichtungen:

- Überlastsensor
- Sensor Sicherheitszapfen vorhanden.



kg (lb)			mm (in)													kg (lb)	
																	
1000 (2204.6)	760 (1675.5)	3	A	A'	B	C	D	D'	E	F	F'	G	H	I	L	M	1030 (2270.7)
			2174 (85.5)	1141 (44.9)	790 (31.1)	1312 (51.6)	2261 (89)	1187 (46.7)	1300 (51.1)	842 (33.1)	331 (13)	353 (13.8)	1150 (45.2)	20 (0.7)	238 (9.3)	777 (30.5)	





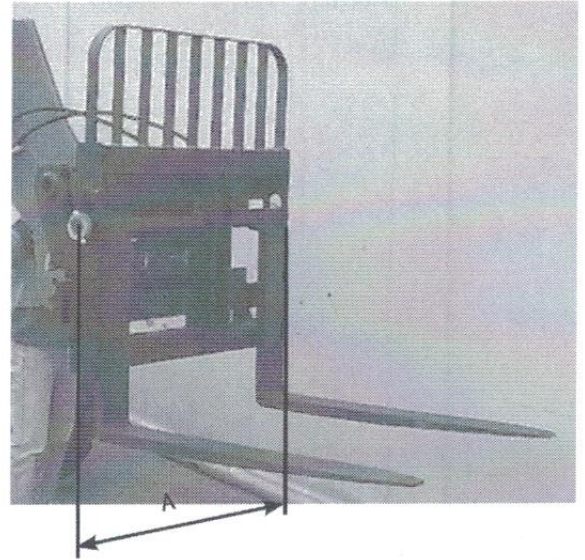
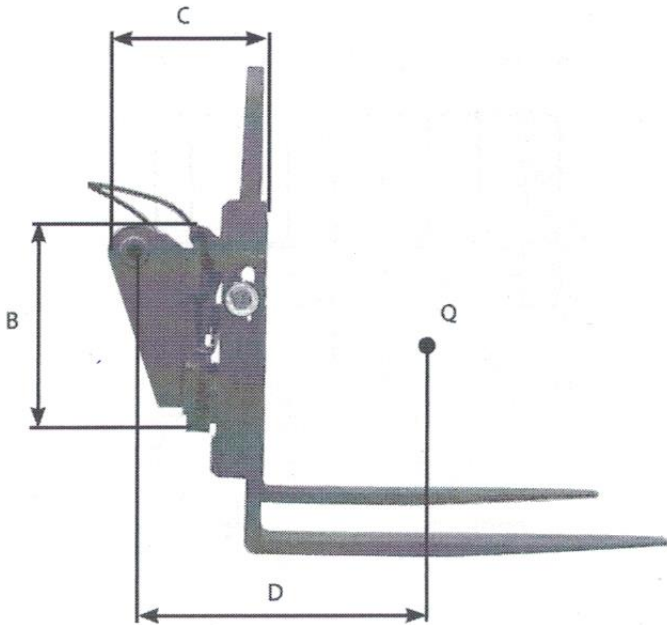
IT

PORTAFORCHE FLOTTANTE CON  
TRASLAZIONE

EN

SIDE SHIFT CARRIAGE

DE

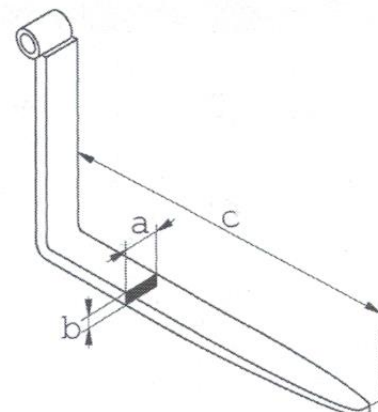
SCHWEBEND GABELTRÄGER MIT  
TRANSLATION

## CARATTERISTICHE - CHARACTERISTICS - DATEN

DESCRIZIONE DESIGNATION BESCHREIBUNG	Qmax (Kg)	MIS. INGOMBRO OVERAL LENGTH ABMESSUNGEN (mm)			CARICO LOAD CENTRE LAST D	PESO WEIGHT GEWICHT
		A	B	C		
TDL FLOT/1030	4999	1110	745	470	890 mm	610 Kg

## CARATTERISTICHE - CHARACTERISTICS - DATEN

DESCRIZIONE DESIGNATION BESCHREIBUNG	Qmax (Kg)	MIS. INGOMBRO OVERAL LENGTH ABMESSUNGEN (mm)			PESO WEIGHT GEWICHT
		A	B	C	
F FLOTT	5000	150	60	1200	141 Kg



IT

**ARGANO 3 T****Descrizione:**

Argano idraulico 3t

**Caratteristiche:**

- Tiro al 3° strato di 3000Kg.
- Velocità massima al 3° strato 23mt/min
- Il tiro è in due taglie.
- La fune è di 49mt, diametro 10mm disposta su tre strati.
- Motore orbitale Sauer-Danfoss OMSU
- Riduttore epicicloidale con freno negativo a dischi in bagno d'olio.
- Il tamburo è filettato e dotato di un rullo pressa fune in modo da assicurare sempre un corretto avvolgimento della fune.
- Presenza di un guida fune che migliora ulteriormente l'avvolgimento della fune sul tamburo.
- Classificazione ISO 4301/1: T4,L2,M4.

**Sicurezze:**

- Fine corsa discesa idraulico positivo.
- Fine corsa salita idraulico positivo.

EN

**WINCH 3 T****Description:**

3t Hydraulic winch

**Features:**

- Pull at 3<sup>rd</sup> layer 3000kg.
- Maximum speed at 3<sup>rd</sup> layer 23 m/min
- The pull is in two sheaves.
- The rope is 49 m long, 10mm diameter arranged in three layers.
- Sauer-Danfoss OMSU orbital motor
- Planetary drive with negative oil bath disk brake
- The drum is threaded and provided with a rope press roller in order to always ensure correct winding of the rope.
- Presence of a rope guide which further improves the winding of the rope on the drum.
- ISO 4301/1 Classification: T4, L2, M4.

**Safety devices:**

- Positive hydraulic descent limit switch.
- Positive hydraulic ascent limit switch.

DE

**WINCH 3 T****Beschreibung:**

Hydraulische Seilwinde 3t

**Eigenschaften:**

- Zuglast in 3. Seillage 3000 kg
- Max. Seilgeschwindigkeit in 3. Lage 23 m/min
- Der Zug hat zwei Baugrößen
- Das Seil hat 49 m Länge, 10 mm Durchmesser und ist in drei Lagen angeordnet.
- Orbitalmotor Sauer-Danfoss OMSU
- Planetengetriebe mit Scheibenbremse im Ölbad (Negativ-Bremsen)
- Die Trommel mit Gewinde weist eine Seilpressrolle auf, damit das Seil immer korrekt aufgewickelt wird.
- Vorhandensein einer Seilführung, um das Aufwickeln des Seils auf der Trommel noch weiter zu verbessern
- Klassifikation nach ISO 4301/1: T4,L2,M4.

**Sicherheiten:**

- Positiver hydraulischer Endschalter für Senken.
- Positiver hydraulischer Endschalter für Heben.





[kg] (lb)	[t] (t)	[mm] (in) x [m] (ft)	[m/min] [ft/min]	[bar] (psi)	[mm] (in)												[kg] (lb)
				P max													
3000 (6614)	5 (5)	∅ 10 (0,4) x 49 (160)	23 (75)	210 (3045)	A	B	C	D	E	F	G	H	I	L	M	N	395 (870)
					1810 (71)	900 (35)	506 (20)	730 (29)	353 (14)	270 (11)	750 (29)	750 (29)	780 (31)	873 (35)	680 (27)	200 (8)	

